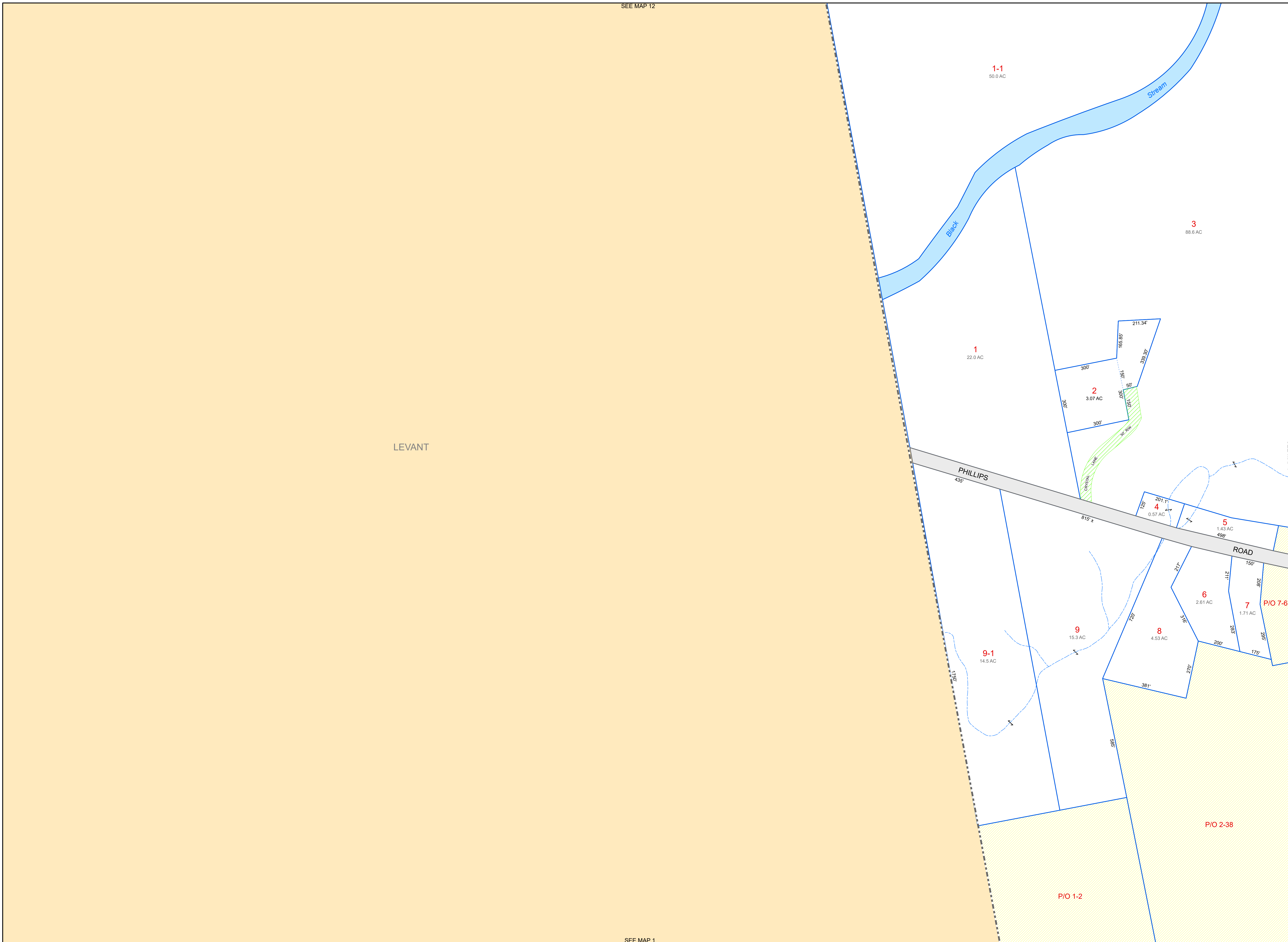


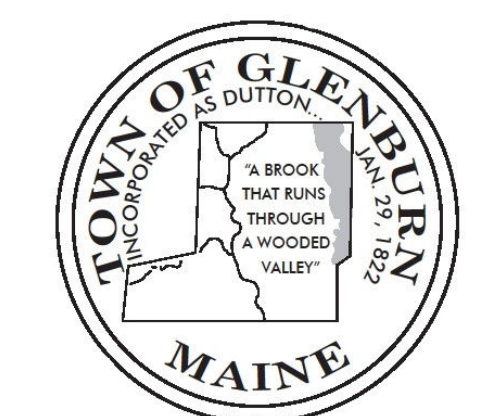
SEE MAP 12



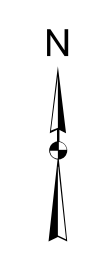
SEE MAP 1

PROPERTY MAPS  
**Tax Map**  
**06**

**GLENBURN**  
 Penobscot County, ME



**DRAFT MAP - FOR REVIEW ONLY!**

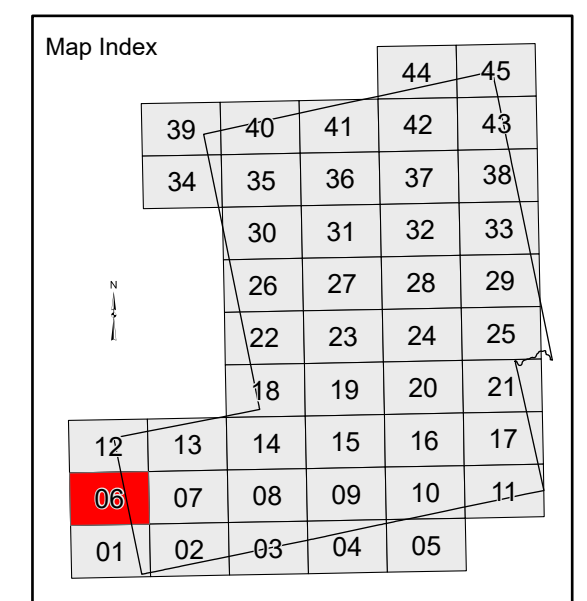
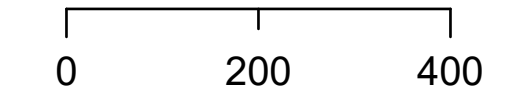


**LEGEND**

- PROPERTY LINE
- PUBLIC RIGHT-OF-WAY
- PRIVATE RIGHT-OF-WAY
- RAILROAD RIGHT-OF-WAY
- EASEMENT or ROW
- HISTORIC/SUBDIVISION LINE
- PARCEL HOOK
- 2-1** PARCEL ID NUMBER
- 150' SURVEY DIMENSION (FEET)
- 1 SURVEY LOT NUMBER
- 1.25 AC ASSESSED ACREAGE
- HYDROLOGY

The information on this map is for assessment purposes only, is not a legal survey, and is not intended to be used for conveyance.

SCALE: 1 in = 200 ft



Original map created by J. W. Sewall Company and revisions made by 45 Degree North Cartographic and CAI Technologies.  
 Map updated by LatLong Logic, LLC with Maine Assessment and Appraisal Services, Inc. (04/01/2022)

Print Date: 01/24/2023

Glenburn Assessor's Office  
 144 Lakeview Road  
 Glenburn, Maine 04401  
 (207) 942-2905